

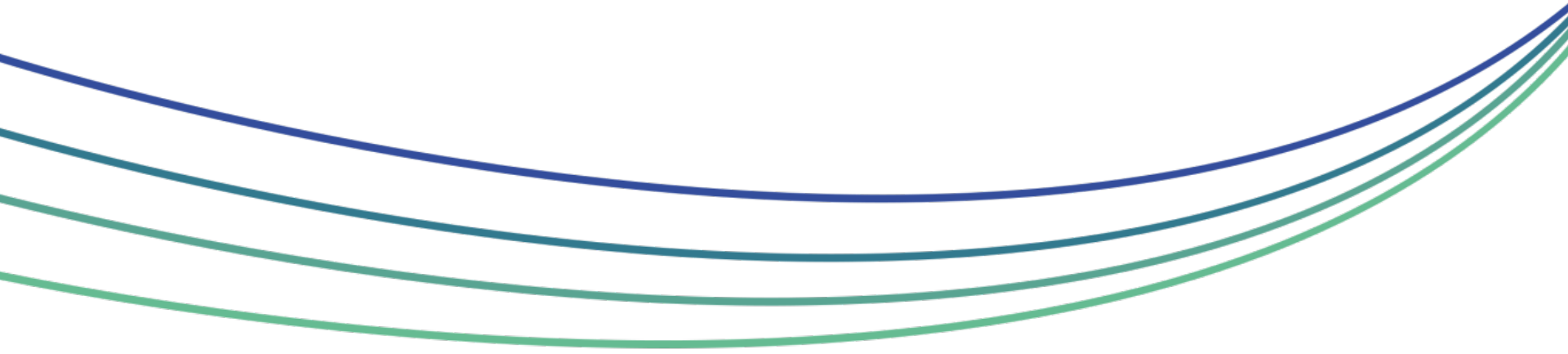
HALTON

SAFEGUARDING

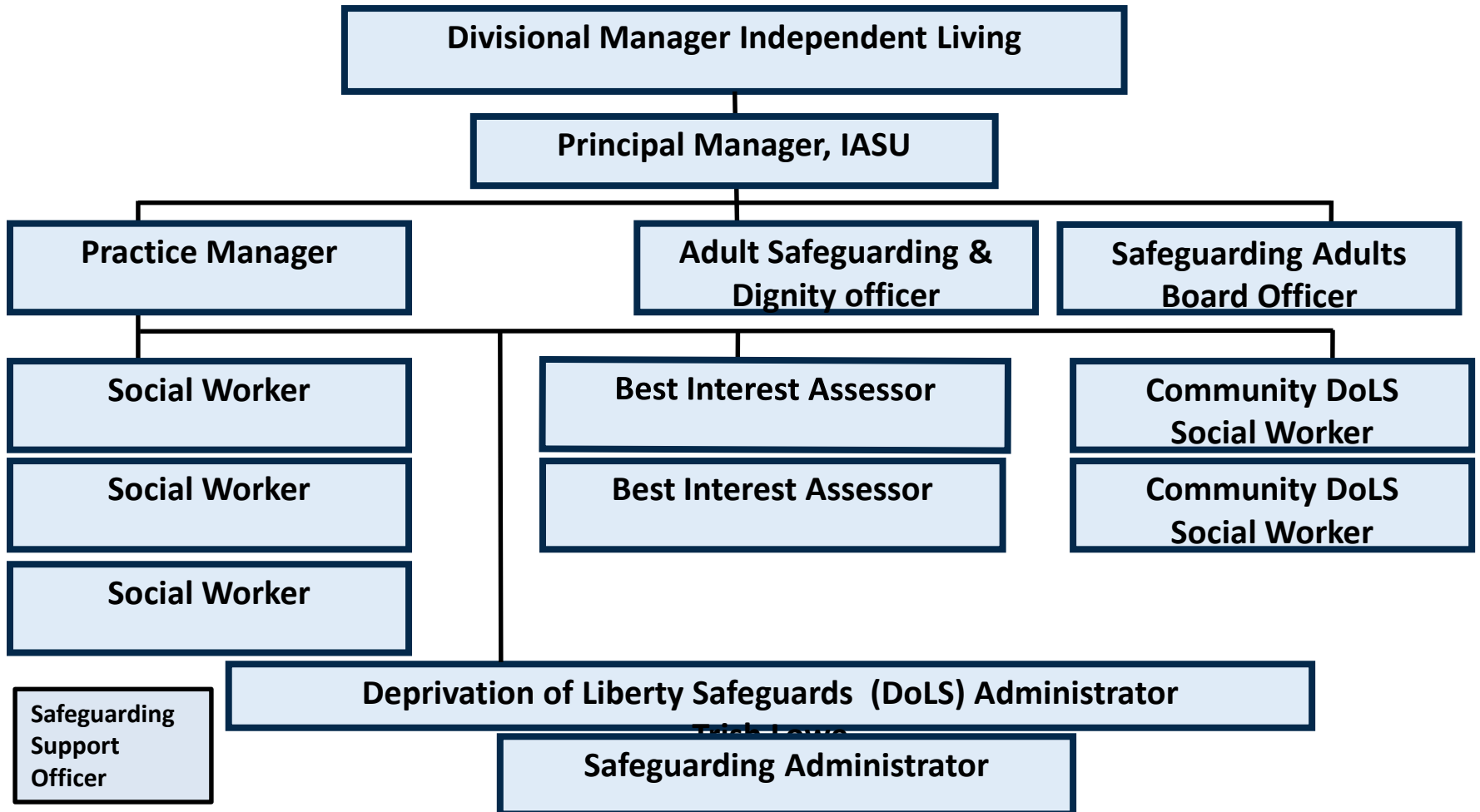
ADULTS

BOARD

Halton Borough Council - Integrated Adult Safeguarding Unit (IASU)




The Team




Integrated Adult Safeguarding Unit – what we do!

- Triage Safeguarding Alerts
- Triage Care Concerns – CQC regulated services
- Conduct further enquiries into complex cases of high risk, high harm, multiple in care homes
- Conduct further enquiries where cases are joint worked with PPU/PPD
- Support failing care homes/care providers
- MARAC
- DoLS – acts as the Supervisory Body
- Self Neglect Panel
- Independent Hospitals oversight
- SAB
- PIPOT
- BIA forum
- MSP Forum
- Safeguarding Champions Forum
- Audit / QA
- Awareness sessions
- Policy

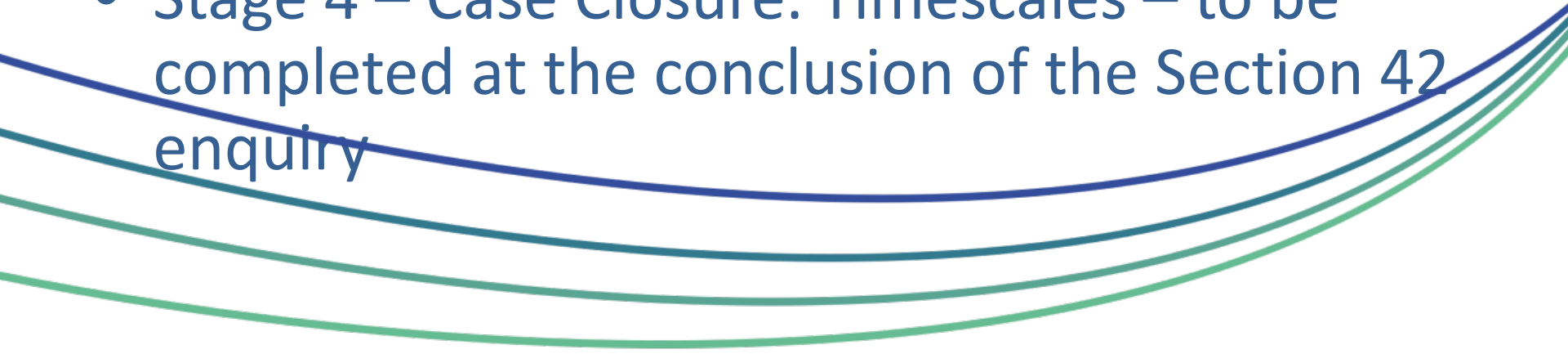
Safeguarding Process

- An Alert raised with Halton Borough Council – passed to the Integrated Adult Safeguarding Unit desktop
 - The alert is screened and thresholds are used to determine – adult at risk and if safeguarding enquiries are needed
 - Each individual case is allocated appropriately.
 - Strategy Meetings / Strategy Discussions – you may be a part of this – information gathering to determine next steps.
- 
- The bottom of the slide features several decorative, curved lines in shades of blue and green, sweeping across the width of the page.

Integrated Adult Safeguarding Unit

- Enquiries to alerts where significant harm /death has occurred
 - Which meet the criteria for police involvement
 - Multiple in care home / care provider settings
 - Complex Safeguarding Enquiries which are high risk
 - Deprivation of Liberty Safeguards (DoLS)
- 
- The bottom of the slide features several decorative, curved lines in shades of blue and green, sweeping across the width of the page.


Procedures

- Stage 1 - Safeguarding Alert. Timescales – same day the concern has been identified
 - Stage 2 – Risk Assessment. Timescales - within 48 hours of safeguarding being raised
 - Stage 3 – Section 42 enquiry. Timescales – to complete within 28 days of the alert
 - Stage 4 – Case Closure. Timescales – to be completed at the conclusion of the Section 42 enquiry
- 

Safeguarding

- Definition of Safeguarding

'A measure taken to protect someone or something or to prevent something undesirable..' Oxford English Dictionary

- Something has to happen?
 - We need to do something?
 - Undesirable – to whom?
- 

What Safeguarding is or not – points to consider

- Protection V Autonomy
- Making Safeguarding Personal
- Capacity – unwise decisions, Section 44 of the MCA 05 . Section 127 of the Mental Health Act
- Adult at Risk / Vulnerable Adult
- Human Rights / Social Justice
- *‘You can’t safeguard someone who does not want to be safeguarded’*
- *‘Safeguarding is not about investigating crimes’*
- *‘We can’t close care homes down’*

Safeguarding Adults

- No Secrets 2000
- ADASS 2005
- Care Act 2014
- The term 'vulnerable adult' has now been replaced with 'adult at risk', In line with the implementation of the Care Act 2014.
- ...specific adult safeguarding **duties** apply to any adult who:
 - has care and support needs and
 - is experiencing, or is at risk of, abuse or neglect and
 - is unable to protect themselves because of their care and support needs

Principles of Safeguarding

- **Empowerment**
- People are supported and encouraged to make their own decisions and informed consent.
- **Prevention**
- It is better to take action before harm occurs.
- **Proportionality**
- The least intrusive response appropriate to the risk presented.
- **Protection**
- Support and representation for those in greatest need.
- **Partnership**
- Services offer local solutions through working closely with their communities. Communities have a part to play in preventing, detecting and reporting neglect and abuse.
- **Accountability**
- Accountability and transparency in delivering safeguarding.

Care Act 2014 and Safeguarding

- **Section 1:** The Local Authority has an overriding **duty** to **promote individual well being** which also covers the protection from abuse or neglect;
- **Section 2:** Outlines the **duty to reduce dependency on state intervention through preventing, delaying and reducing needs for care and support** which includes preventing needs that arise from experiencing, or being at risk of abuse and neglect;
- **Section 4:** The promotion of independence is supported by the **duty** to provide information and advice which **includes information around staying** safe and who to contact if people are concerned about not being able to maintain their own safety;
- **Section 6:** Outlines organisations general **duties** of cooperation, which includes the duty upon **all organisations to work together to safeguard adults** who are experiencing, or at risk of abuse and neglect;
- **Section 11:** The refusal of a needs assessment allows the Local Authority to discharge its duty of assessment if an adult refuses their right to a S9 needs assessment. However the Local Authority will be under a **specific duty** to undertake an assessment (when an adult is refusing) if there is **reasonable belief that the adult is under coercion, or the adult is experiencing, or at risk of abuse or neglect;**
- **Section 42:** **Duty** of enquiry by Local Authority applies when there is a reasonable belief that an adult in its area (a) with care and support needs (b) is experiencing, or at risk of experiencing abuse and neglect (c) and is unable to safeguard themselves as a result of their care and support needs. When these conditions are satisfied the Local Authority **must make, or cause whatever enquiries it deems necessary to determine what actions (if any) are necessary to safeguard the adult.** The Local Authority cannot delegate its duty under S42 and when it causes an enquiry to be made by an external partner, it **must** satisfy itself that the enquiry has been concluded effectively and determine if it needs to undertake any further enquiries under S42 of the Care Act 2014. ***NB the eligibility for a safeguarding adult enquiry is determined by the conditions set out in S42 of the Care Act 2014 and it is UNLAWFUL to decline an enquiry on the grounds that someone is not receiving, or eligible for on-going paid support.***

Care Act 2014 and Safeguarding cont....

- **Section 43:** **Requires** the Local Authority to establish a Safeguarding Adults Board (SAB) whose main objective is to protect adults from experiencing, or being at risk of abuse and neglect. The three main duties of the SAB are to produce an annual strategic plan, publish an annual report and undertake a safeguarding adults review under certain circumstances.
- **Section 44:** The SAB **must** commission a safeguarding adults review when an adult with needs for care and support (a) dies and abuse or neglect is suspected (b) is alive but it is believed the adult experienced significant abuse or neglect. All partners **must** cooperate to ensure lessons can be identified to improve local multi agency safeguarding work.
- **Section 45:** Enables the SAB to request specific information from an individual that is necessary to support the Board to meet its primary objectives of protecting adults from abuse or neglect.
- **Section 47:** Outlines the circumstances under which a Local Authority is under a **duty** to safeguard an individual's property when they are being cared for (temporarily or permanently) away from their home.
- **Section 68:** Places a **duty** on the Local Authority to provide an advocate to support an adult who would experience significant difficulties participating in a S42 enquiry, or a safeguarding adults review under S44. This Local Authority is not under a duty to provide an advocate if they believe there is an appropriate independent person to support the adult.
- **Section 81:** Places a **duty** of Candour on organisations to provide information when the person's safety is affected during the course of being provided a service by their organisation

Other law applied to Safeguarding

- Mental Capacity Act 2005 - Section 1, 4, 44
- Mental Health Act 1983 – section 127
- Human Rights Act 1998 – 3,5,8
- Crime and Disorder Act 1998
- Data Protection Act 2018 - GDPR
- Freedom of Information Act 2000 – information to the public
- Public Relations Act 1998 – Whistleblowing
- Health and Social Care Act 2008 (regulated activities) regulations 2014 - CQC
- Deprivation of Liberty Safeguards
- Not an exhaustive list.....

Making Safeguarding Personal – what is it?

- **Making Safeguarding Personal (MSP)** is an initiative which aims to develop a **person-centred and outcomes focus** to safeguarding work in supporting people to improve or resolve their circumstances.
- MSP is **applicable to all agencies** working with adults in relation to safeguarding, including those at the initial stages of a safeguarding concern being identified. This guidance is designed to provide advice on how best to engage with adults, and work in a committed, multi-agency partnership approach to the subject.

What MSP seeks to achieve

- **What MSP Seeks to Achieve:**
- A personalised approach enabling safeguarding to be done with and not to people, using practical methods defined by the adults individual needs rather than those of an organisation
- The outcomes an adult wants, by **determining these at the beginning** of working with them, and ascertaining if those outcomes **were realised at the end**
- Improvement to people's circumstances rather than on 'investigation and conclusion'
- Utilisation of person-centred practice rather than '**putting people through a process**'
- Good outcomes for people by working with them in a timely way, rather than one constrained by timescales
- Improved practice by supporting a range of methods for staff learning and development
- Learning through sharing good practice
- Further development of recording systems in order to understand what works well
- Broader cultural change and commitment within organisations, to enable practitioners, families, teams and the Board to know what difference has been made.

- Points to consider....

- *‘The local authority is a servant, not a master... Vulnerable adults... do not seek to be controlled by the state’ – Munby 2010*
- *‘The onset of mental incapacity is not the opportunity for moral correction’
- Eldergill 2014*
- *‘..what good is it making someone safe if it merely makes them miserable’
– Munby 2014*
 - *‘..a gilded cage is still a cage; Munby 2014*

Useful Contacts

- Report a Safeguarding Alert – 0151 907 8306
 - Report a care concern – careconcerns@halton.gov.uk
 - Halton Borough Council – 0303 333 4300
 - Emergency Duty Team – 0345 050 0148
 - Police (non emergency) – 101
 - Crimestoppers – 0800 555 111
 - Gas emergencies – 0800 111 999
 - Electricity emergencies – 0800 195 4141
 - Citizens Advice Bureau – 08444 111 444
 - Fire home safety check (fire service) – 0800 389 0053
 - Changing Lives (IDVA's) – 0300 1111 247
 - PALS (patient advice and liaison service) – 01925 275512
 - Community Fire Safety Team – 01606 868700
- 

IASU contact & HSAB website details

- 0151 907 8306 9am-5pm Monday to Friday
 - 0345 050 0148 – Evenings and Weekends (including bank holidays)
 - IASU Duty 0151 511 8555
 - Adultsafeguarding@halton.gov.uk
 - More Information/guidance at Halton Safeguarding Adults Board (HSAB) www.haltonsafeguarding.co.uk
- 