

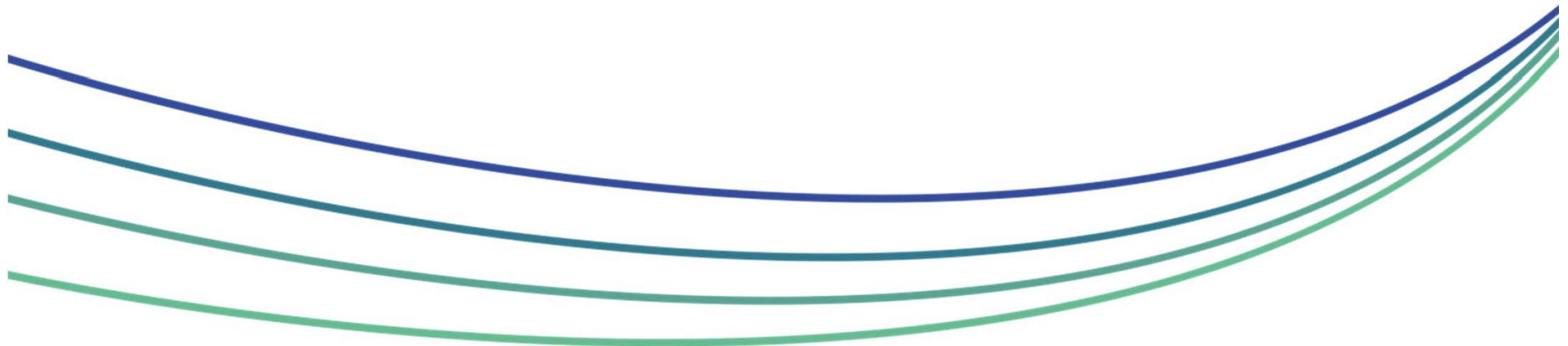
HALTON

SAFEGUARDING

ADULTS

BOARD

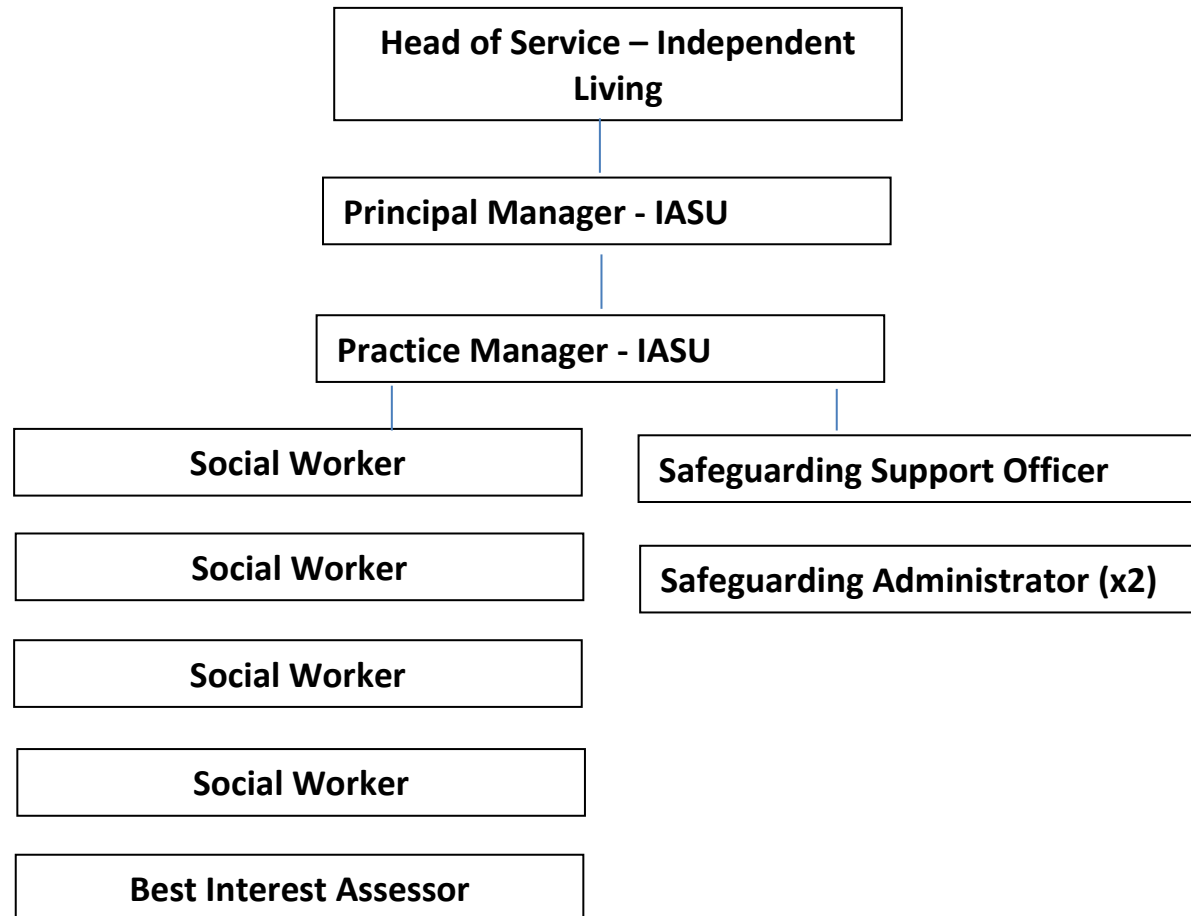
Halton Borough Council - Integrated Adult Safeguarding Unit (IASU)



Principles of Safeguarding

- **Empowerment**
- People are supported and encouraged to make their own decisions and informed consent.
- **Prevention**
- It is better to take action before harm occurs.
- **Proportionality**
- The least intrusive response appropriate to the risk presented.
- **Protection**
- Support and representation for those in greatest need.
- **Partnership**
- Services offer local solutions through working closely with their communities. Communities have a part to play in preventing, detecting and reporting neglect and abuse.
- **Accountability**
- Accountability and transparency in delivering safeguarding.

The Team



Team

HALTON

SAFEGUARDING

ADULTS

BOARD

- Head of Service- Helen Moir
- Principal Manager- Katy Goodall
- Practice Manager- Stephanie Grace
- Safeguarding Social Worker – Marie McFarlane
- Safeguarding Social Worker – Hayley Conchie
- Safeguarding Social Worker – Ashlea Bate
- Safeguarding Social Worker – Jayne Skillander
- Best Interests Assessor – Christine Birch
- Safeguarding Support Officer – Lesley Middlehurst
- Safeguarding Admin Support – Billie Campbell
- Safeguarding Admin Support – Georgie Room

Integrated Adult Safeguarding Unit – what we do!

- Triage Safeguarding concerns
- Triage Provider Led Concerns – CQC regulated services
- Conduct further enquiries into complex cases of high risk, high impact, multiple concerns in care homes
- Conduct further enquiries where cases are joint worked with PVP
- Support care homes/care providers
- Represents Adult Social Care at MARAC / MAPPA / PSG / CSE / CHDG / HDAF /
- Independent Hospitals oversight
- Represents Adult Social Care at various groups and subgroups at SAB
- Awareness sessions and staff inductions
- Policy development and oversight
- Deprivation of Liberty Safeguards
- LPS – implementation

- To name a few things.....

How to raise a safeguarding concern

- Call 0151 907 8306 – 9-5 Monday to Friday
- Call 0345 050 0148 – after 5pm, evenings and weekends
- Report online (note these will not get picked up if referred on a weekend) at <https://adult.haltonsafeguarding.co.uk/what-is-abuse/>
- Further guidance, support, training, resources at <https://adult.haltonsafeguarding.co.uk/professionals/>
- Queries – adultsafeguarding@halton.gov.uk or IASU Duty 0151 511 8555
- DoLS requests and queries – dols@halton.gov.uk
- Provider led concerns and enquiries – careconcerns@halton.gov.uk